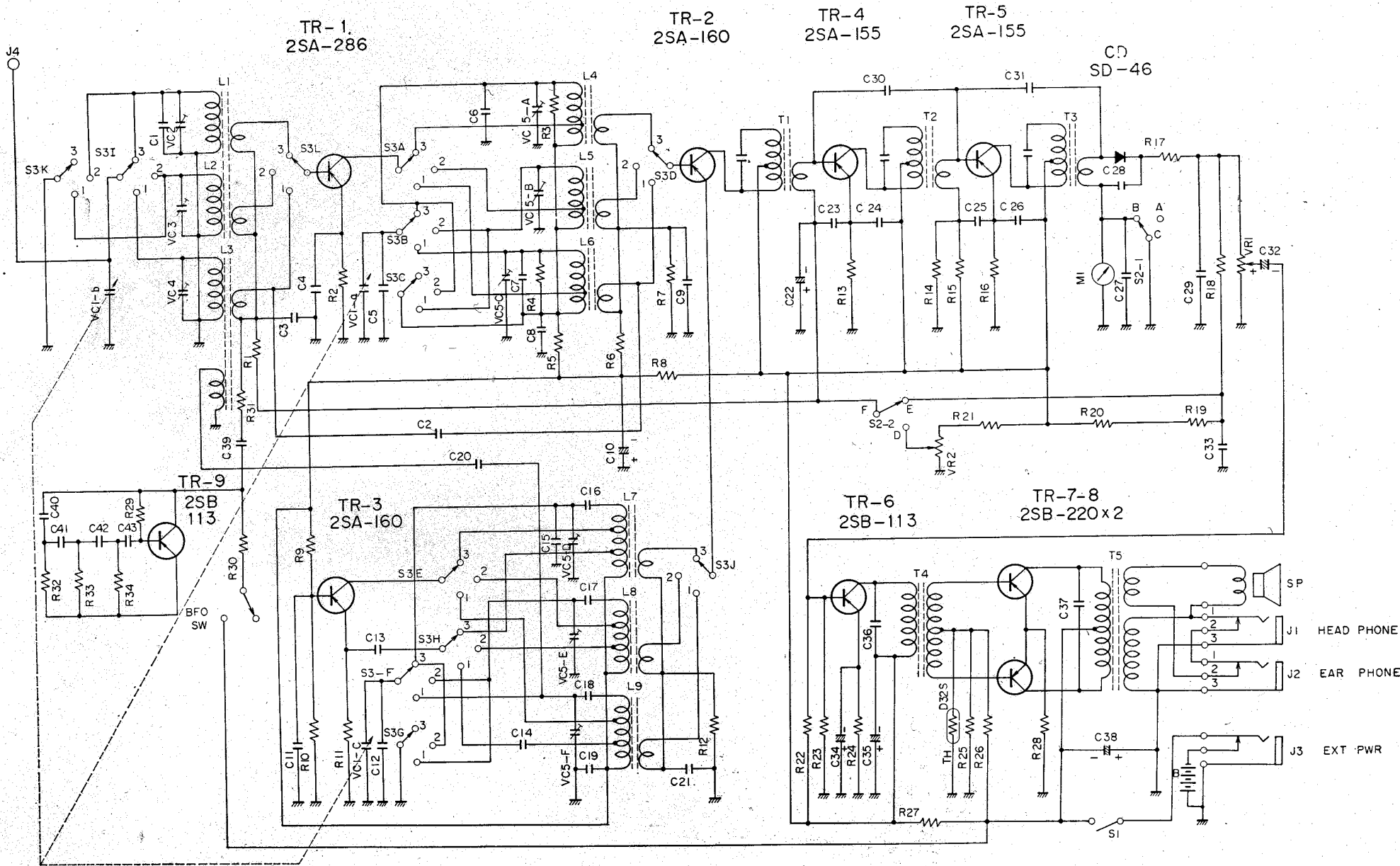


# SCHEMATIC DIAGRAM



NOTES. S<sub>3</sub> : BAND SWITCH  
 (SHOWN IN BEACON BAND POSITION)  
 DF - RADIO SWITCH  
 (SHOWN IN NORMAL RECEIVING POSITION)  
 S<sub>1</sub> : POWER SWITCH

# PARTS LIST

TR1	Transistor	2SA-286
TR2	"	2SA-160
TR3	"	"
TR4	"	2SA-155
TR5	"	"
TR6	"	2SB-111
TR7	"	2SB-221
TR8	"	"
TH	Thermistor	D32S
CD1	Diode	SD-46
L1	ANT coil	
L2	"	
L3	"	
L4	RF coil	
L5	"	
L6	"	
L7	OSC coil	
L8	"	
L9	"	

T1	IF Transformer			
T2	"			
T3	"			
T4	Input Transformer			
T5	Output Transformer			
C1	Capacitor ceramic	43PF	50V	$\pm 5\%$
C2	" "	3PF	"	$\pm 0.5PF$
C3	" "	0.05 $\mu F$	"	+100%—0
C4	" "	"	"	"
C5	" "	5PF	"	$\pm 0.5PF$
C6	" "	47PF	"	$\pm 5\%$
C7	" "	5PF	"	$\pm 0.5PF$
C8	" "	0.05 $\mu F$	"	+100%—0
C9	" "	0.05 $\mu F$	50V	"
C10	" chemical	30 $\mu F$	6V	
C11	" ceramic	0.05 $\mu F$	50V	+100%—0
C12	" "	15PF	"	$\pm 5\%$
C13	" "	0.01 $\mu F$	"	+100%—0
C14	" Mylar	0.002 $\mu F$	"	$\pm 20\%$

C15	"	"	70PF	"	±5%
C16	"	"	180PF	"	"
C17	"	"	350PF	"	"
C18	"	Styrene	1.000PF	"	"
C19	Capacitor	ceramic	0.05μF	50V	+100%—0
C20	"	"	2PF	"	±0.5PF
C21	"	"	0.05μF	"	+100%—0
C22	"	chemical	10μF	3V	
C23	"	ceramic	0.01μF	50V	+100%—0
C24	"	"	"	"	"
C25	"	"	"	"	"
C26	"	"	"	"	"
C28	"	"	"	"	"
C29	"	"	"	"	"
C30	"	"	5PF	"	±0.5PF
C31	"	"	3PF	"	"
C32	"	chemical	1μF	3V	
C33	"	ceramic	0.002μF	50V	+100%—0
C34	"	chemical	30μF	3V	
C35	"	"	100μF	6V	

C36	"	Mylar	0.01μF	50V	±20%
C37	"	"	0.1μF	"	"
C38	"	chemical	100μF	6V	
R1	Resistor	fixed	RC1/8BZ	2.2KΩ	
R2	"	"	1/8BZ	1KΩ	
R3	"	"	1/8BZ	220KΩ	
R4	"	"	1/8BZ	15KΩ	
R5	"	"	1/8BZ	2.2KΩ	
R6	"	"	1/8BZ	47KΩ	
R7	"	"	1/8BZ	12KΩ	
R8	"	"	1/8BZ	330Ω	
R9	"	"	1/8BZ	22KΩ	
R10	"	"	1/8BZ	5.6KΩ	
R11	"	"	1/8BZ	1KΩ	
R12	"	"	1/8BZ	2.2KΩ	
R13	"	"	1/8BZ	680Ω	
R14	"	"	1/8BZ	2.7KΩ	
R15	"	"	1/8BZ	15KΩ	
R16	"	"	1/8BZ	470Ω	
R17	"	"	1/8BZ	330Ω	
R18	"	"	1/8BZ	6.8KΩ	

R19	Resistor fixed	RC	$\frac{1}{8}$ BZ	27K $\Omega$
R20	"	"	$\frac{1}{8}$ BZ	33K $\Omega$
R21	"	"	$\frac{1}{8}$ BZ	62K $\Omega$
R22	"	"	$\frac{1}{8}$ BZ	22K $\Omega$
R23	"	"	$\frac{1}{8}$ BZ	4.7K $\Omega$
R24	"	"	$\frac{1}{8}$ BZ	470 $\Omega$
R25	"	"	$\frac{1}{8}$ BZ	330 $\Omega$
R26	"	"	$\frac{1}{8}$ BZ	6.2K $\Omega$
R27	"	"	$\frac{1}{8}$ BZ	100 $\Omega$
R28	"	"	$\frac{1}{8}$ BZ	4.7 $\Omega$
VR1	"	variable	3K $\Omega$	(D)
VR2	"	"	10K $\Omega$	(B)
VC1	Capacitor variable			
VC2	"	trimmer		
VC3	"	"		
VC4	"	"		
VC5	"	"		
J1	Head phone Jack			
J2	Ear phone Jack			
M1	Signal level meter			
SP	Speaker			
J3	EXT. POWER			